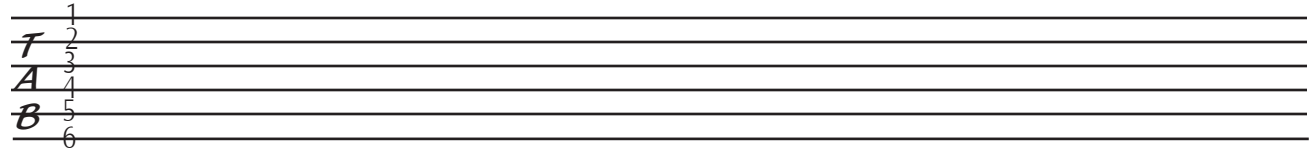
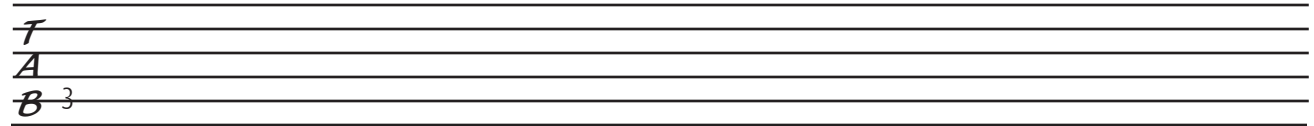


# Tab Reading

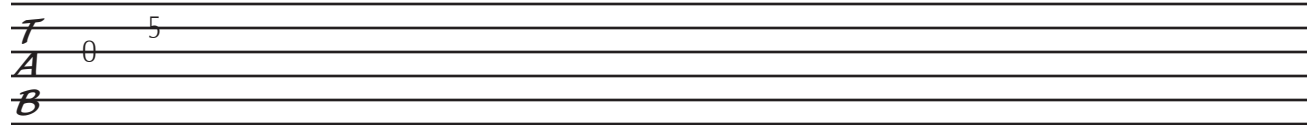
Tablature is a very old way of communicating how something is fingered on a string instrument. Tablature, or tab, is written on a six line staff (shown below). Each of the lines represents one of the strings of the guitar. The lowest sounding string of the guitar (the sixth string) is at the bottom of the staff. The highest sounding string on the guitar (the first string) is at the top of the staff.



In order to communicate which fret/string combination is to be used, the fret number is written on the string played. If I want to play the fifth string at the third fret, I would write it like this:

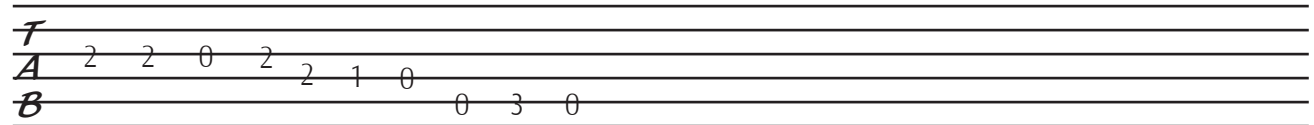


If I want to play the third string open and then the second string at the fifth fret, it would write it like this:



Shown below are a couple of famous blues scale melodies. Try playing them and see if they are familiar:

Example 1



Example 2



Example 1 should sound like "Sunshine of Your Love" if played with the correct rhythm. If played with the appropriate rhythm, Example 2 should sound like "Smoke on the Water." Hopefully you were able to figure out these melodies.