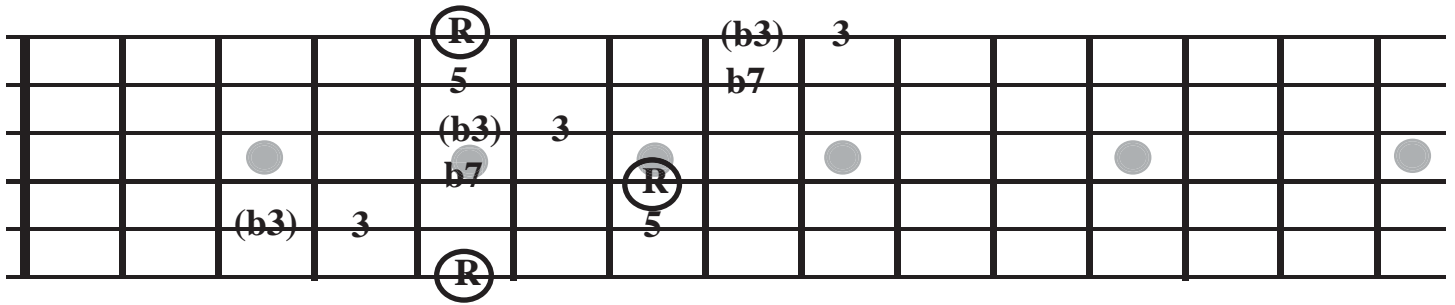


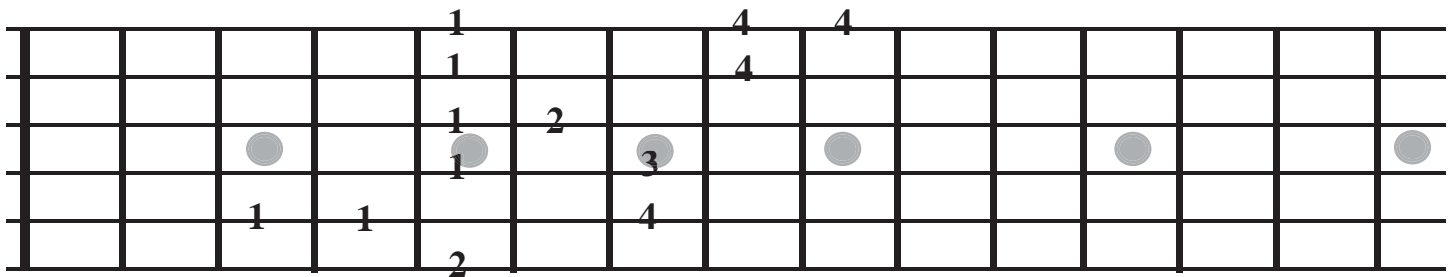
# A7 "BLUESIFIED" ARPEGGIO CONSTRUCTION

First add the b3 from the minor pentatonic/blues scale

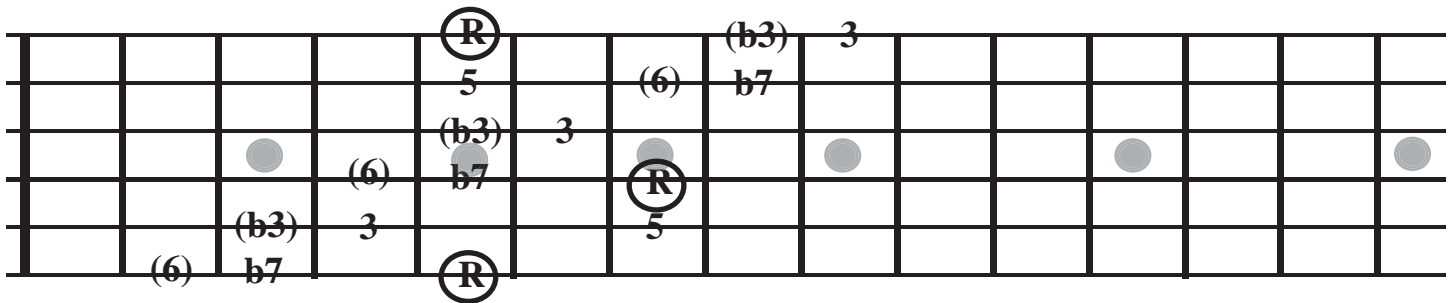


\*Always approach the 3rd from the b3rd in both ascending and descending directions

Here is a suggested fingering:



Next, add the 6th from the major or major pentatonic scale



\*Always approach the 3rd from the b3rd and the b7 from the 6th in both ascending and descending directions

Here is a suggested fingering

